

Total Area:

282 sqm - 3030 sqft

Ground floor:

7.38 x 12.70 mt / 24.21 x 41.66 ft

ceiling height: 3.33 m / 10.92 ft

First floor:

10.90 x 12.70 mt / 35.76 x 41.66 ft

ceiling height 11 m / 36.08 ft

Second floor mezzanine:

10.90 x 4.20 mt / 35.76 x 13.77 ft

Power:

Ground floor:

4x 13, 1x 32 and 1x 63 amp power outlets
Illumination adjustable gallery spot lights

First floor:

8x 13amp, 3x 16 amp, 2x 32 amp, and 1x 63 amp
illumination vintage lamps / daylight

Second floor mezzanine:

10x 13 amp and 6x USB charge power outlets.
illumination adjustable gallery spot lights / daylight

Access:

Ground floor:

double door on street level

Upper floors:

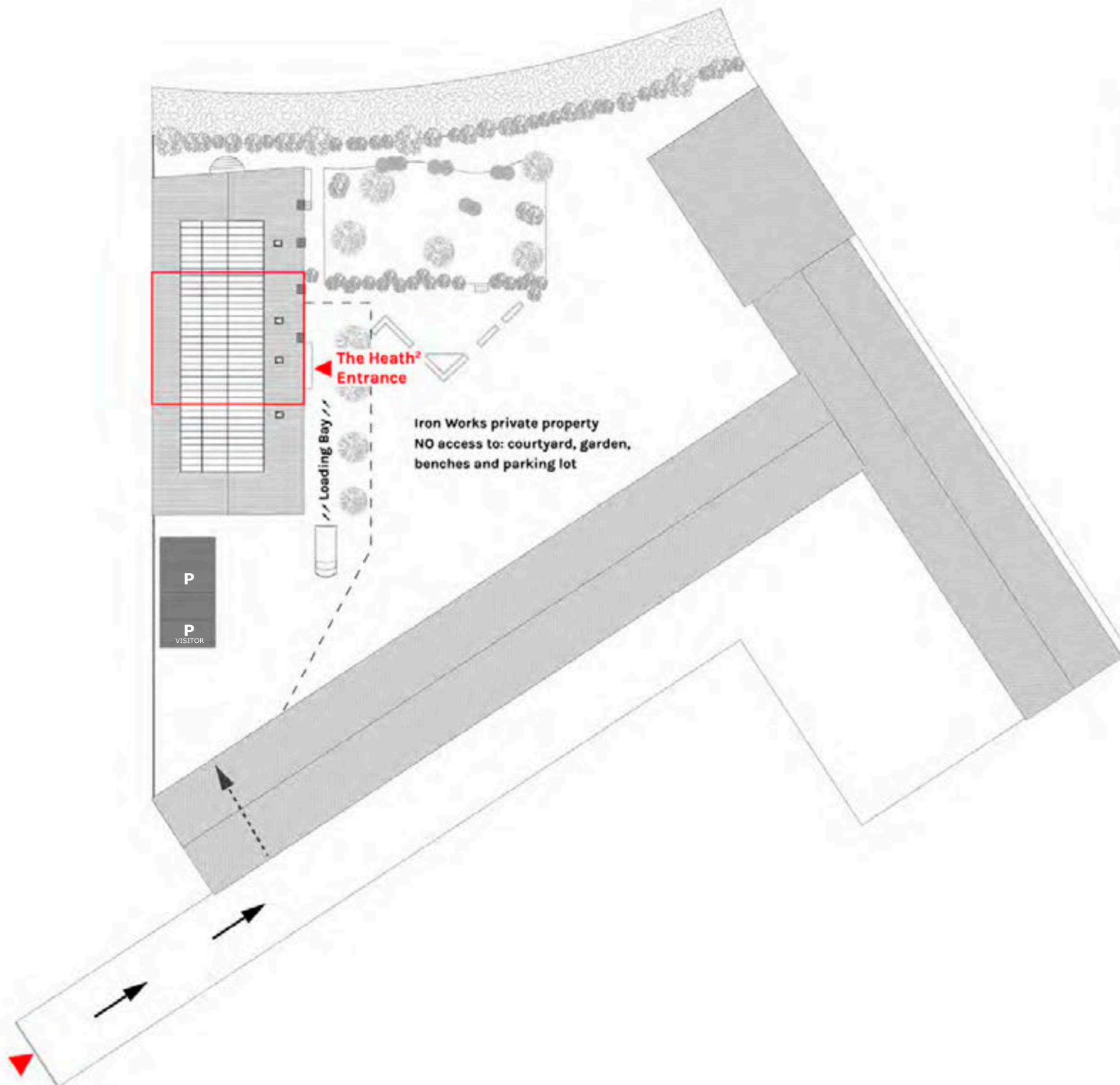
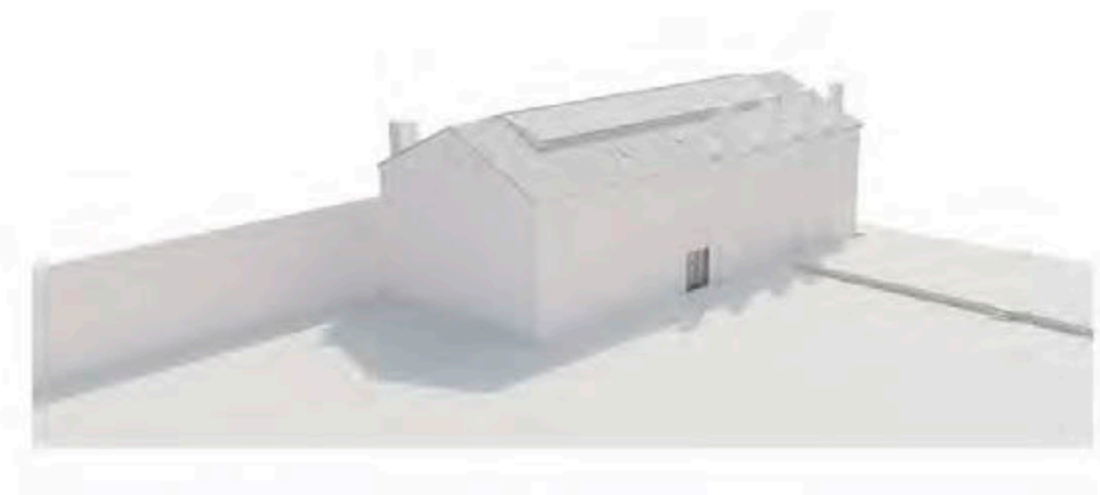
via stairs only

Studio Capacity:

30 / 60 people

Internet:

500MB / 500MB fiber - wifi connection

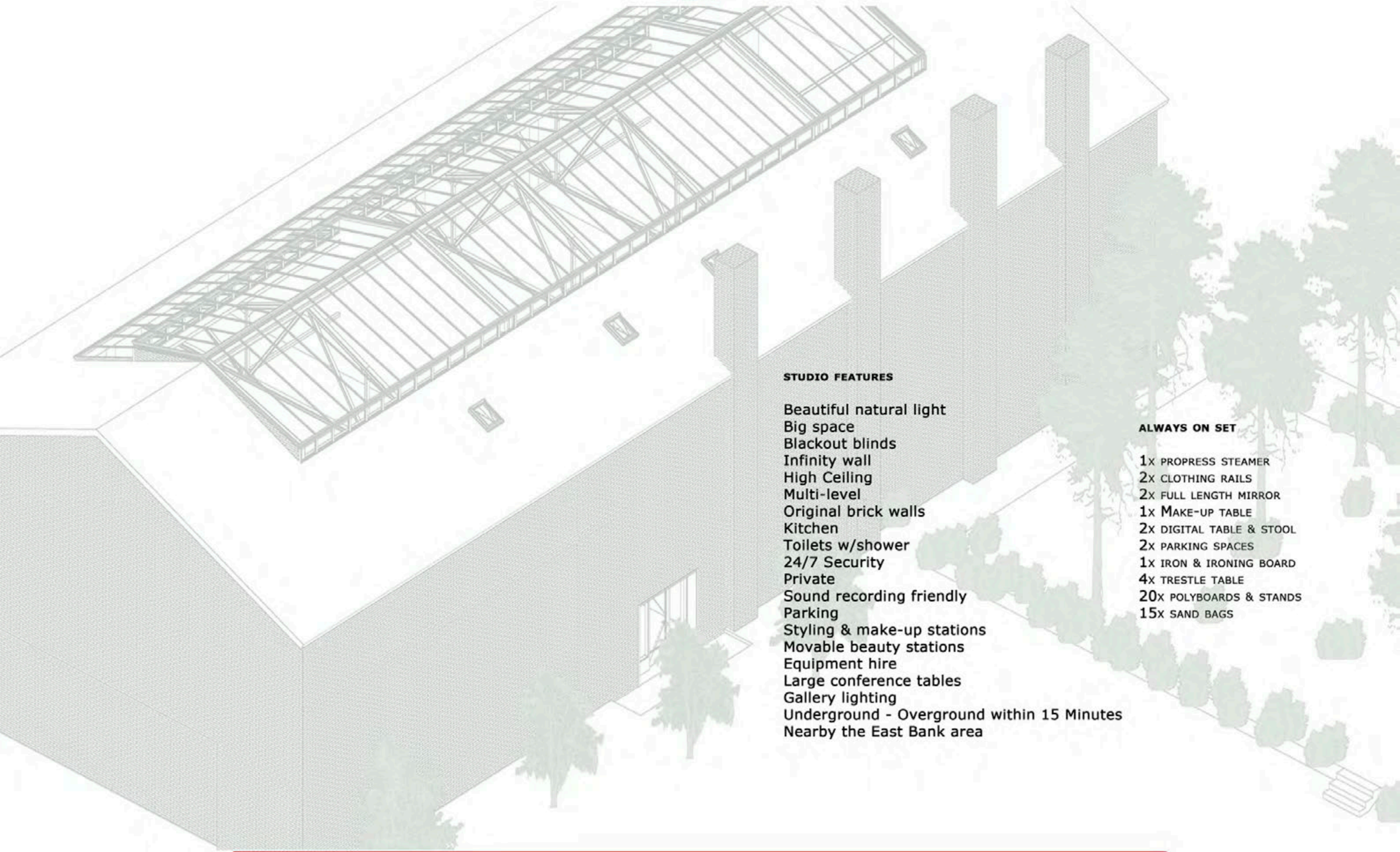


Main entrance
IRON WORKS GATE
 from 58 Dace Road
 walk in UNIT2 buzzer

- The Heath²
 - River Lea
 - ▲ Main Entrance (Dace Road)
 - ▲ The Heath² Entrance
 - // Loading Bay
 - P Parking
 - Private property border (Iron Works)
 - ▶ Underpass
 - ▶ Vehicle Road
- Site Plan 1:200

51.537483, -0.021511





STUDIO FEATURES

Beautiful natural light
Big space
Blackout blinds
Infinity wall
High Ceiling
Multi-level
Original brick walls
Kitchen
Toilets w/shower
24/7 Security
Private
Sound recording friendly
Parking
Styling & make-up stations
Movable beauty stations
Equipment hire
Large conference tables
Gallery lighting
Underground - Overground within 15 Minutes
Nearby the East Bank area

ALWAYS ON SET

1X PROPRESS STEAMER
2X CLOTHING RAILS
2X FULL LENGTH MIRROR
1X MAKE-UP TABLE
2X DIGITAL TABLE & STOOL
2X PARKING SPACES
1X IRON & IRONING BOARD
4X TRESTLE TABLE
20X POLYBOARDS & STANDS
15X SAND BAGS

THE HEATH²

GROUND FLOOR STUDIO - AREA SETUP

94 sqm - 1009 sqft

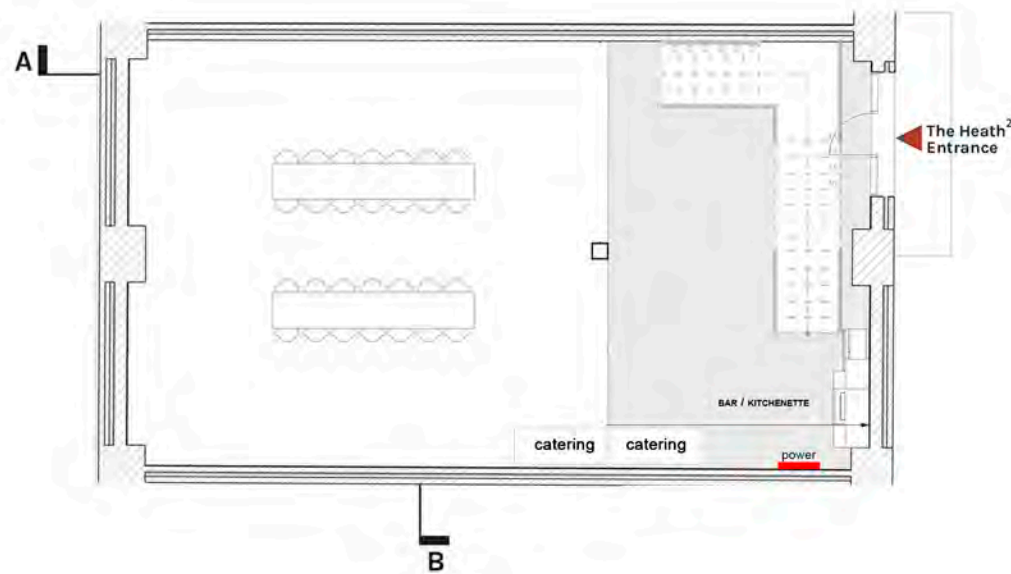
7.38 x 12.70 mt / 24.21 x 41.66 ft

ceiling height: 3.33 m / 10.92 ft

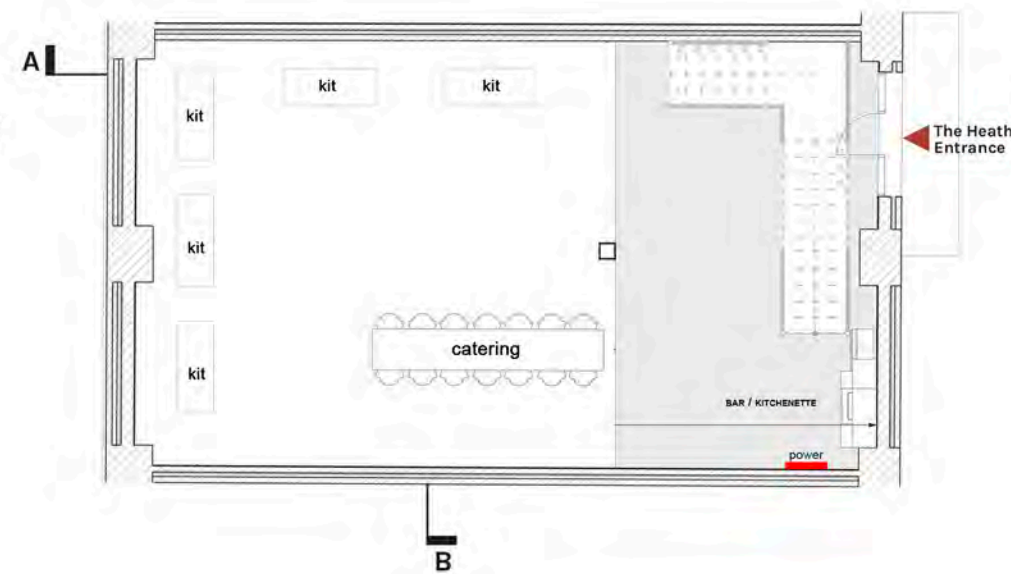
Power:

4x 13, 1x 32 and 1x 63 amp power outlets
adjustable spot lights.

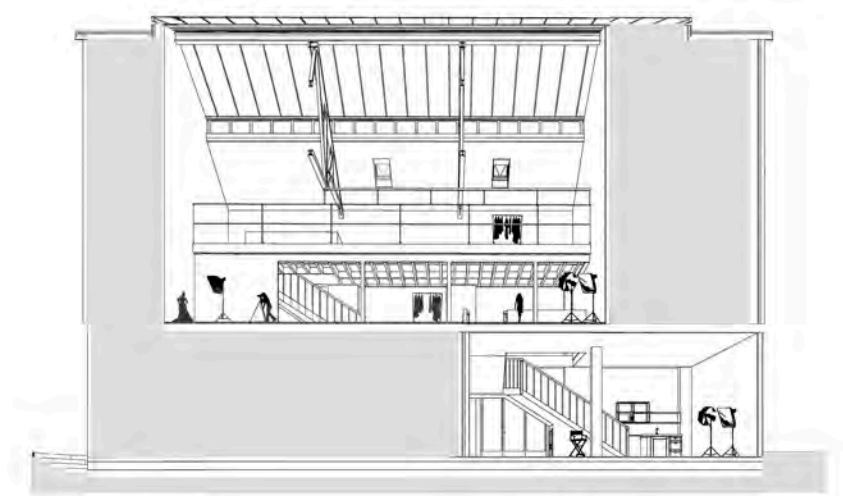
Production setup CATERING - v.01 GF



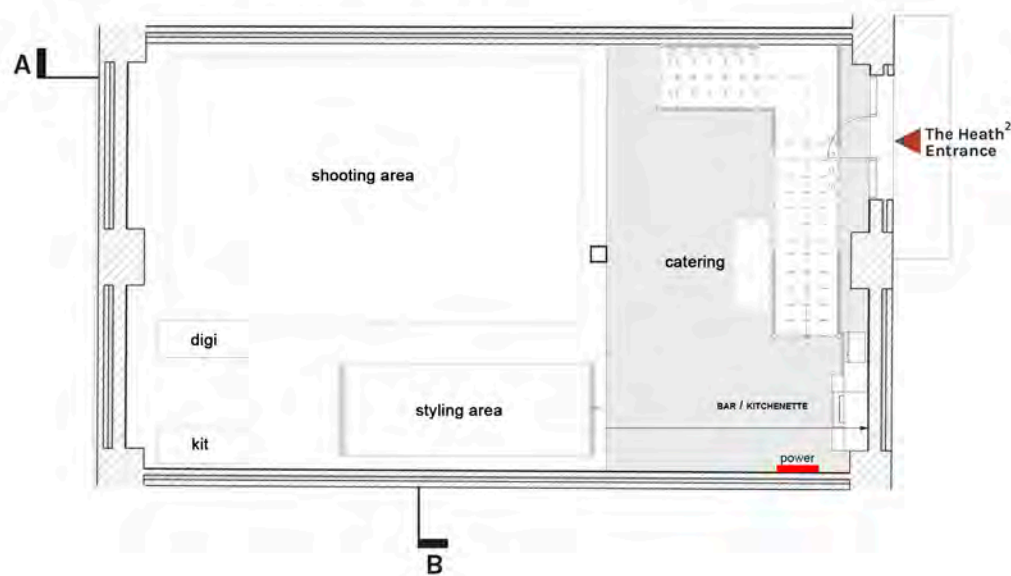
Production setup CATERING - v.02 GF



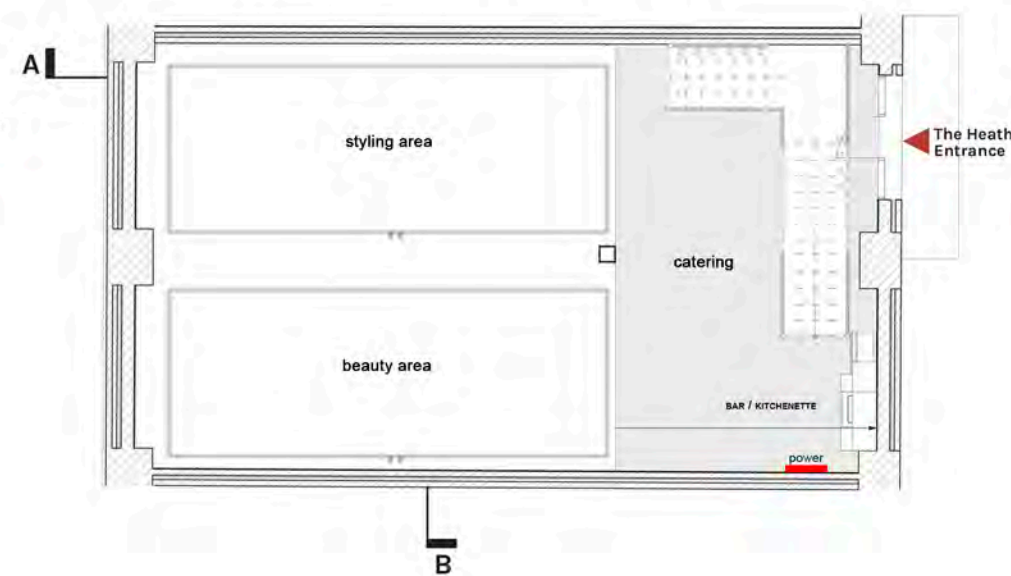
Section B - 3level



Production setup ECOM - v.03 GF



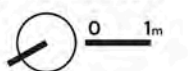
Production setup STYLING - v.04 GF



Production setup SHOOT - v.05 GF



Ground Floor Plan



THE HEATH²

MEZZANINE 2ND FLOOR - AREA SETUP

46 sqm - 493 sqft

10.90 x 4.20 mt / 35.76 x 13.77 ft

ceiling height: 3.33 m / 10.92 ft

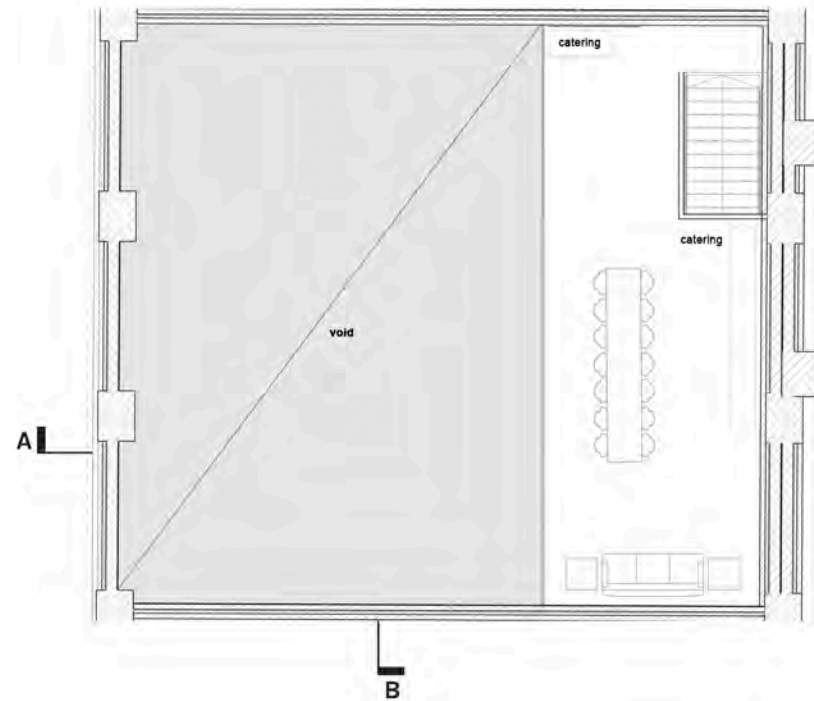
Power:

10x 13 amp and 6x USB charge power outlets.

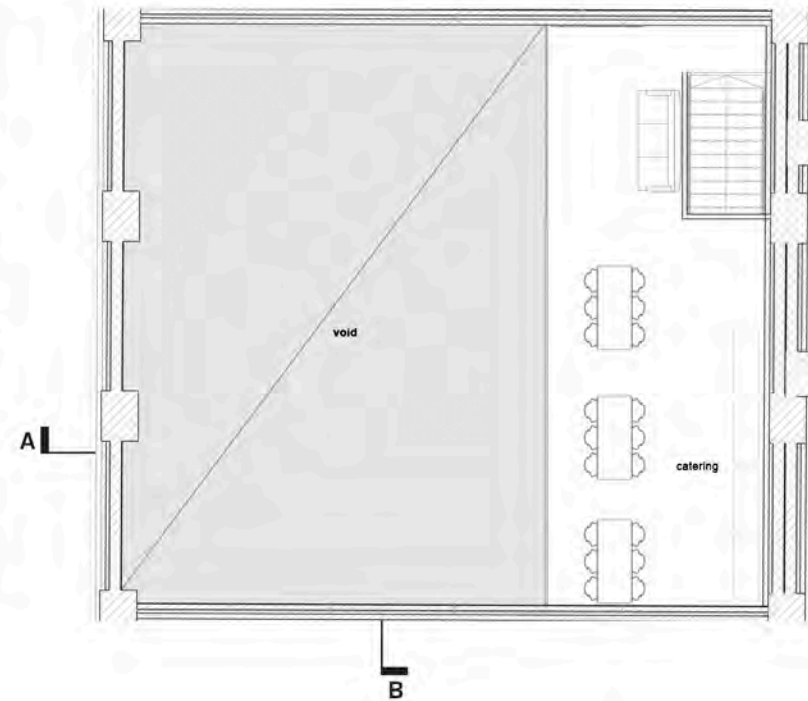
power link to 32 amp on 1st floor.

adjustable spot lights.

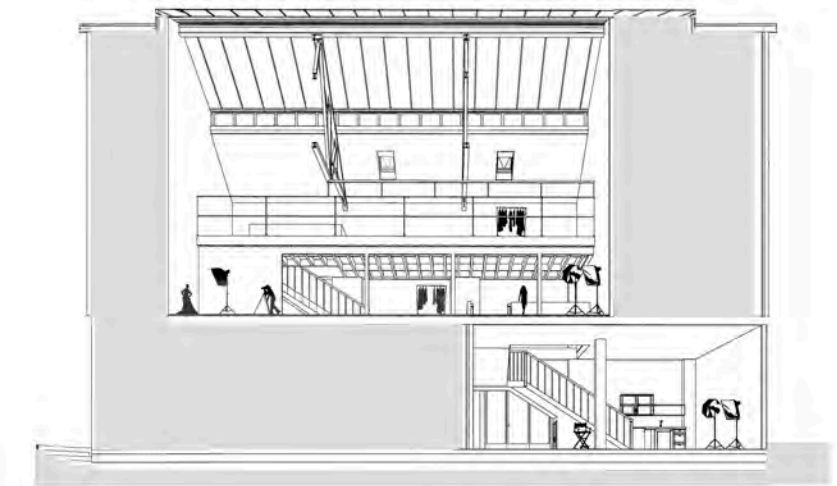
Production setup CATERING - v.08 M



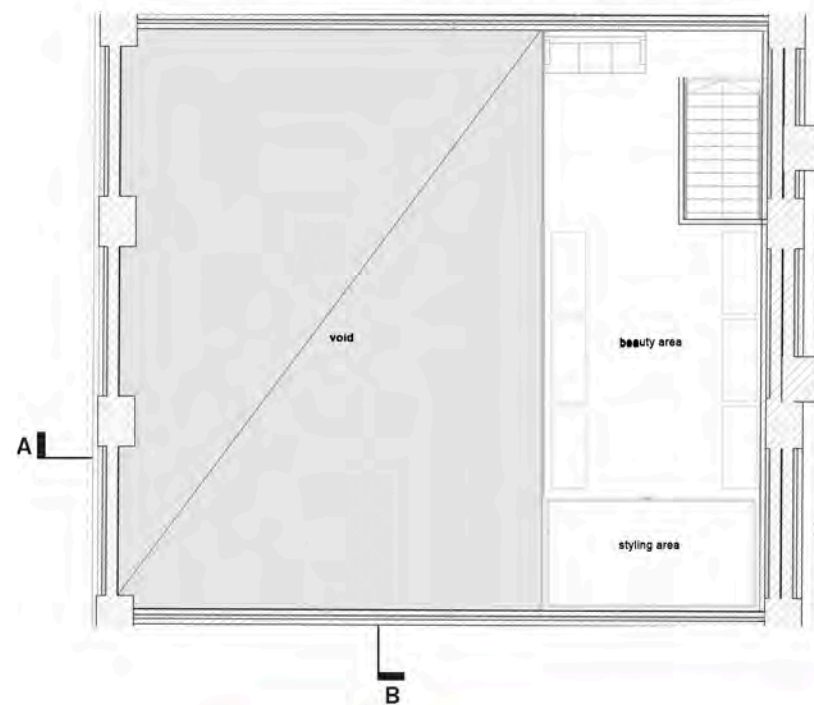
Production setup CATERING - v.07 M



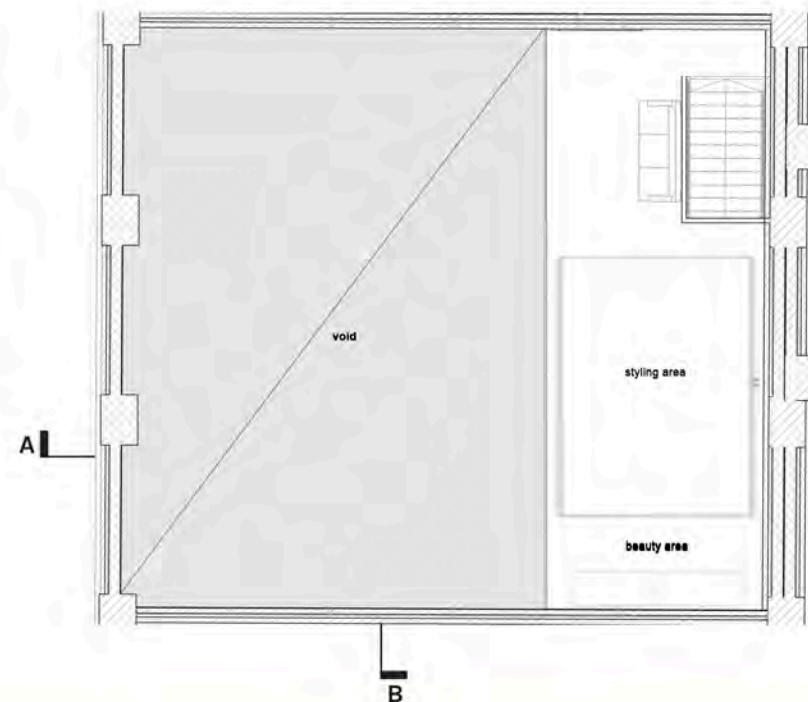
Section B - 3level



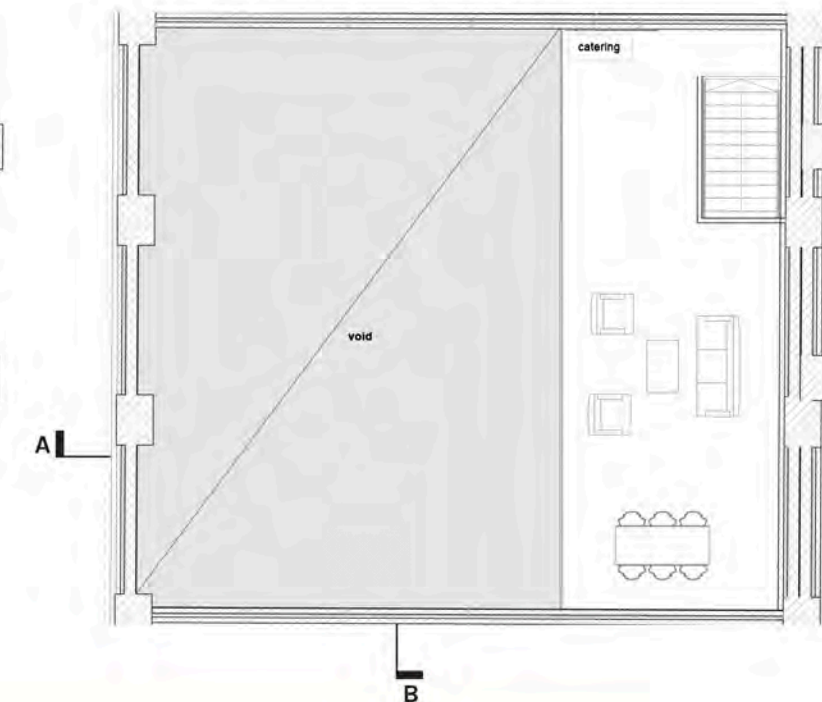
Production setup STYLING & BEAUTY - v.08 M



Production setup STYLING & BEAUTY - v.09 M



Production setup GREENROOM - v.10 M



Second Floor Plan

